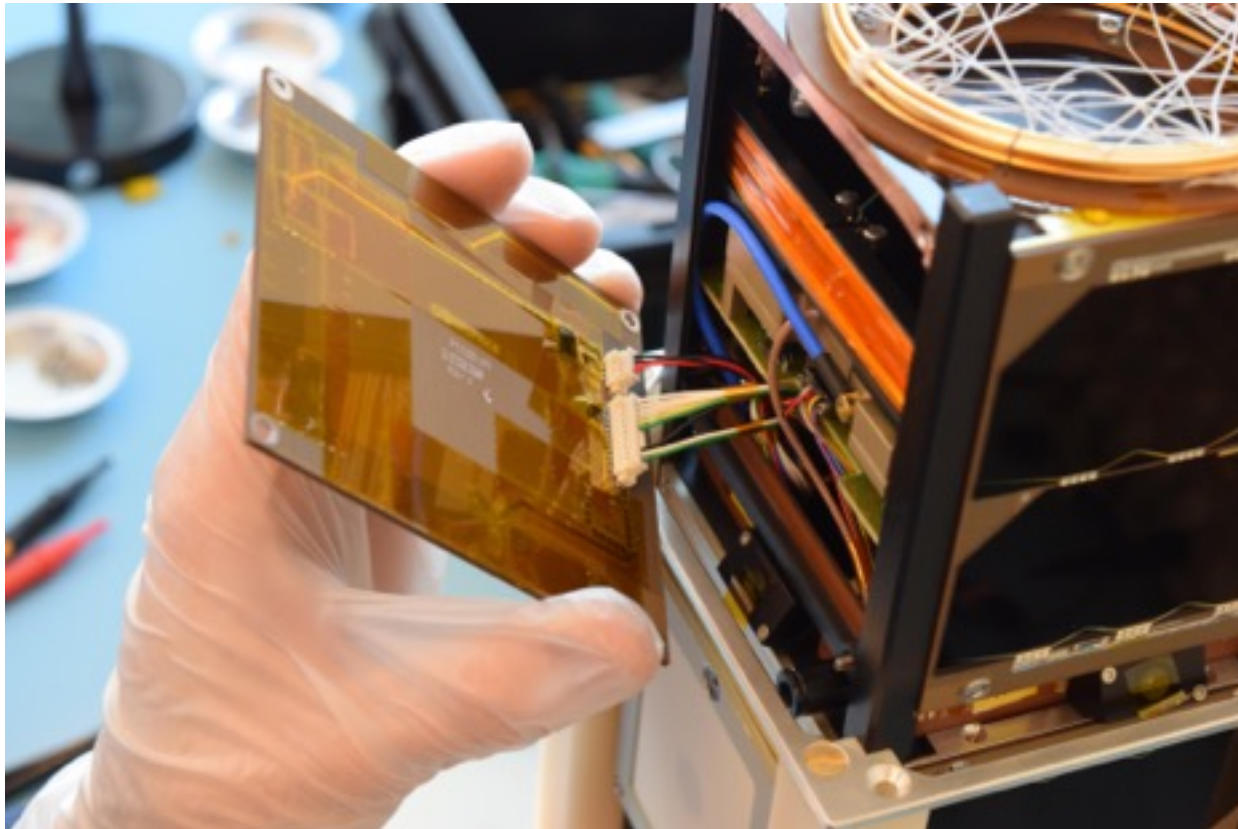


Rapid Success:  
The GOMX-3 Path to Orbit

# Integration Time Crunch



We wanted to make it **easier**

We wanted to make it **faster**

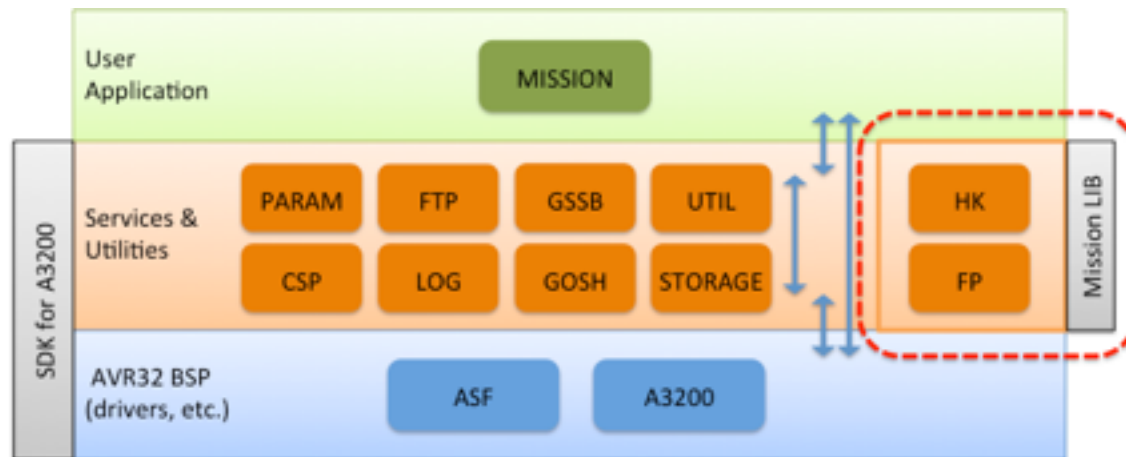
# Shorten Intergration Time

## GomSpace Platform Methodology

- Network based software and hardware design
- Plug and play software “Out of the box”
  - Works across the entire mission chain!

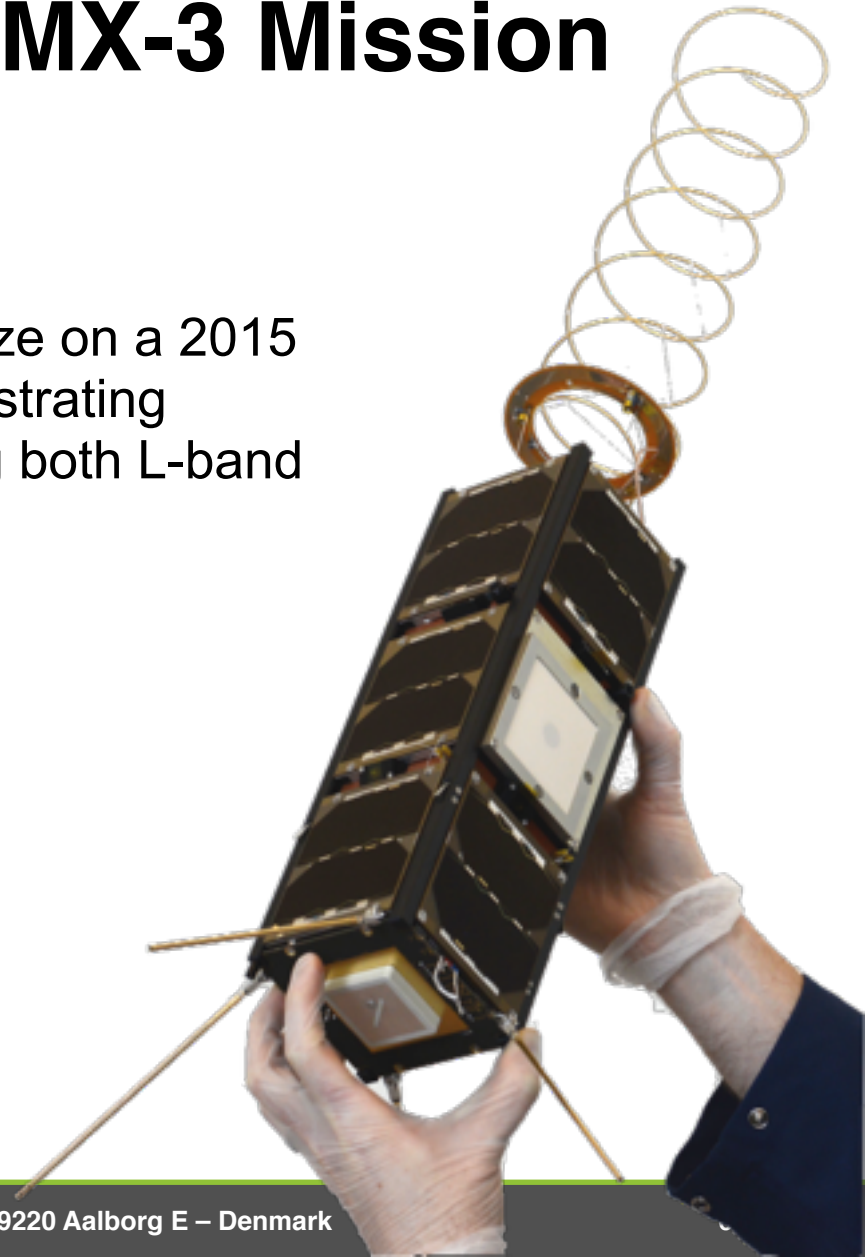
# Adaptable and Reliable Software

- CSP and One-Step-Integration package
  - Plug and play, no communication work required
  - Expandable and adaptable across communication architectures

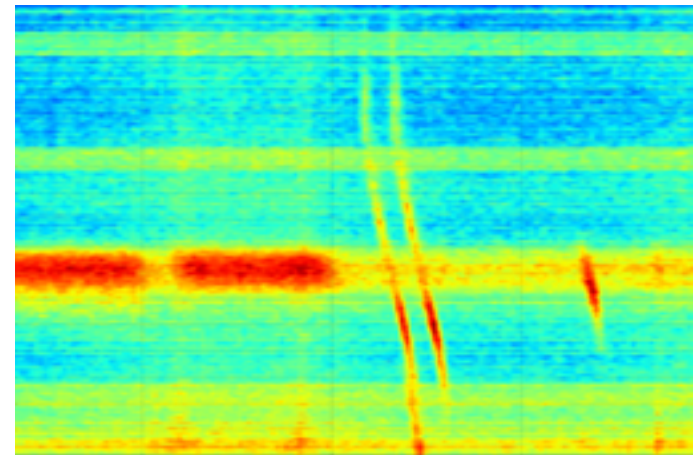
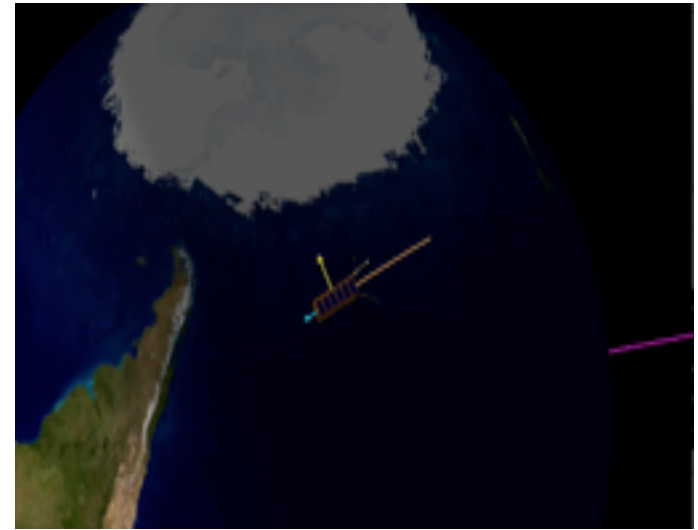
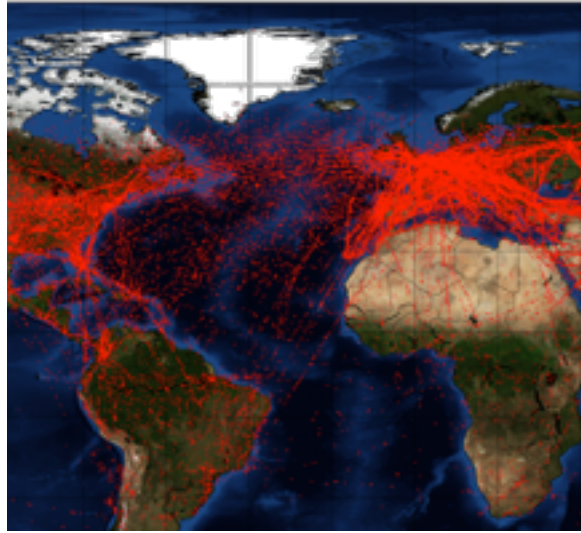


# Example: Our GOMX-3 Mission

- First ESA CubeSat
- Mission Statement
  - The GOMX-3 satellite will capitalize on a 2015 ISS launch opportunity by demonstrating advanced pointing while receiving both L-band and ADS-B signals.
- Schedule
  - Phase A/C Kickoff      2014.05.21
  - Phase D/E Kickoff      2014.11.06
  - Delivery (Houston)      2015.06.10
  - Launch (HTV-5)      2015.08.19
  - Deploy (from ISS)      2015.10.05



# Example: Our GOMX-3 Mission



# Rapid Deployment of ADS-B Capability

- Downlinked > 25,000 unique aircraft
- Downlinked ~205,000,000 aircraft positions





# How Fast Can We Go?

- 2 satellites from scratch in under 1 week



# How Fast Can **You** Go?

- Every GomSpace system comes with basic operational software
- Easy to use software packages provide full end-to-end mission out of the box

# Contact for more information

[info@gomspace.com](mailto:info@gomspace.com)

Phone: +45 9635 6111

