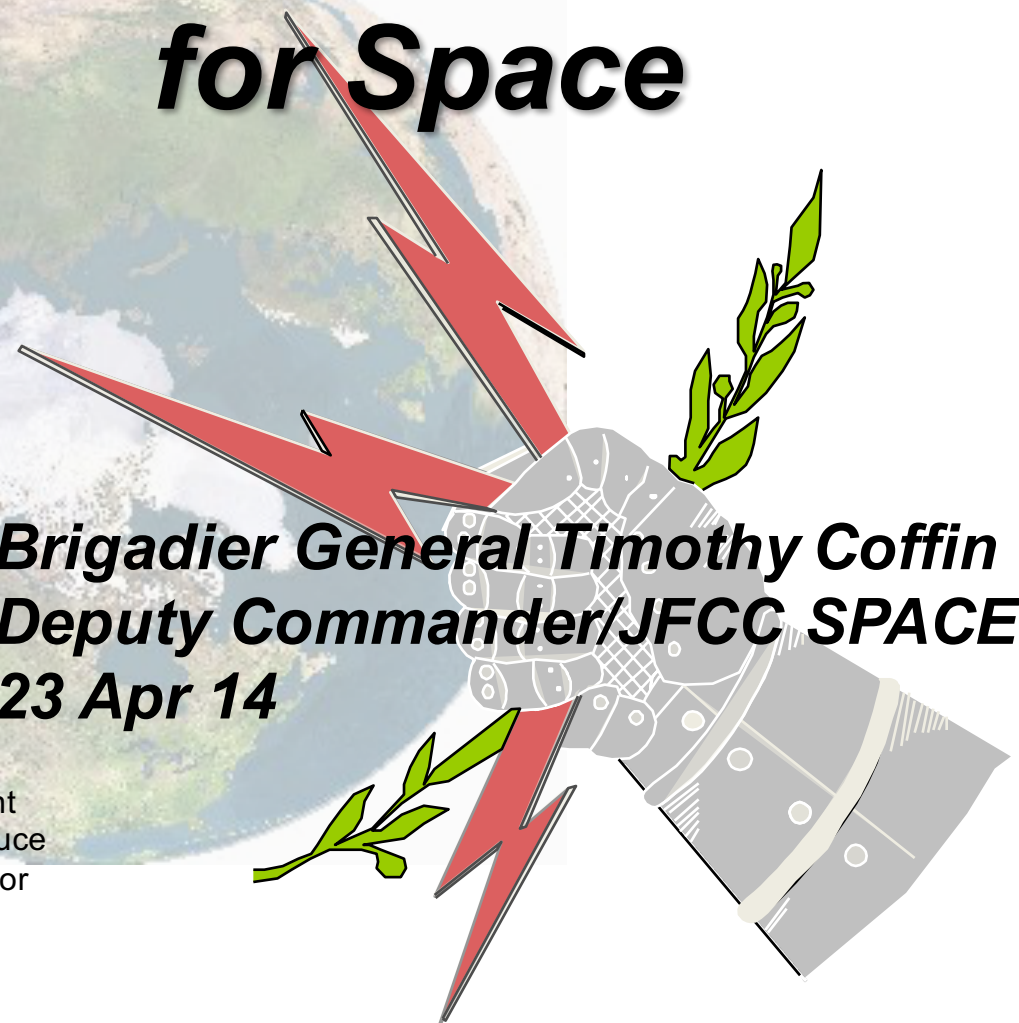




Joint Functional Component Command for Space



***Brigadier General Timothy Coffin
Deputy Commander/JFCC SPACE
23 Apr 14***

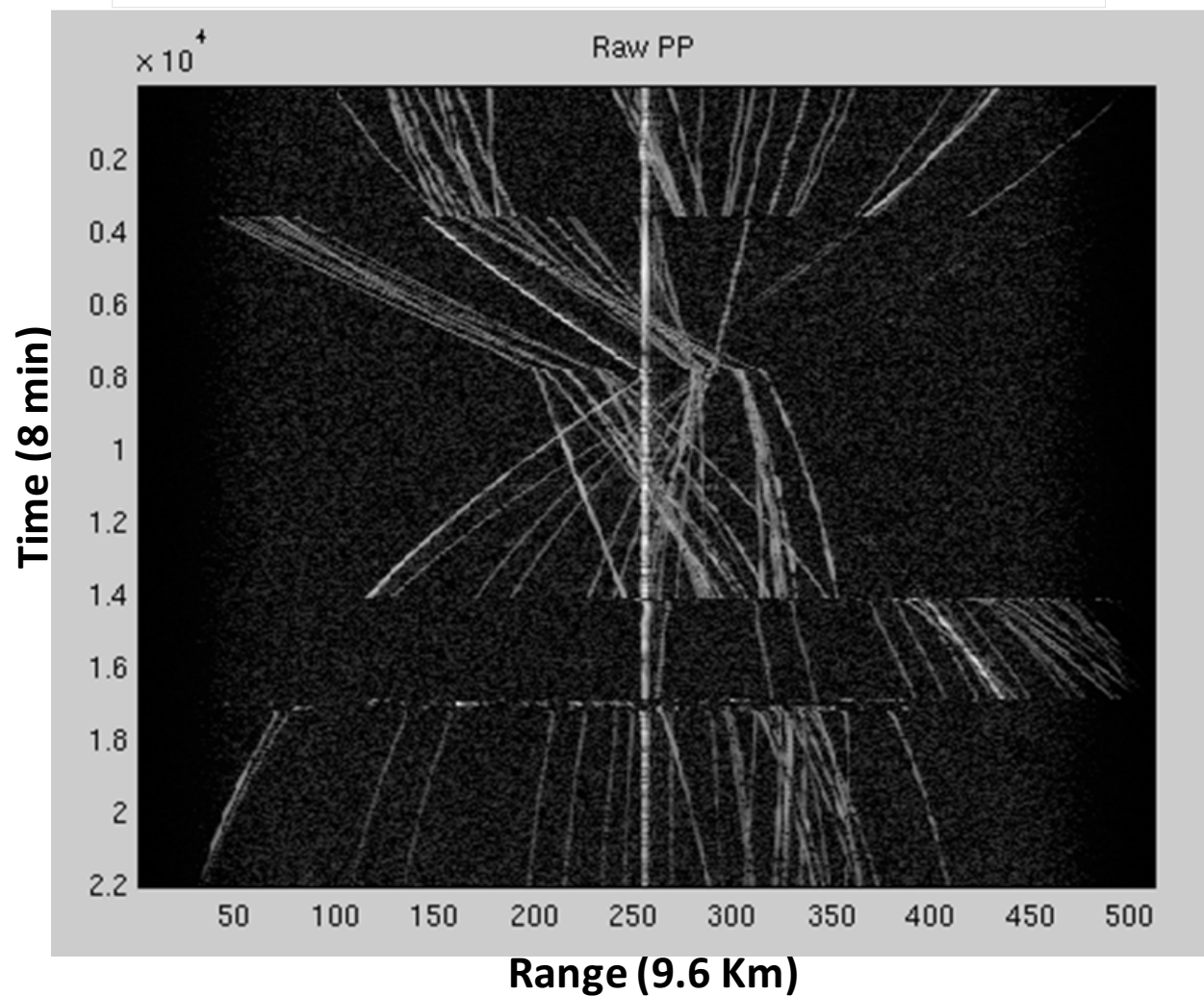
This Briefing is: **UNCLASSIFIED**

This briefing is for information only. No US Government commitment to sell, loan, lease, co-develop or co-produce defense articles or provide defense services is implied or intended.



Launch Processing – ORS-3

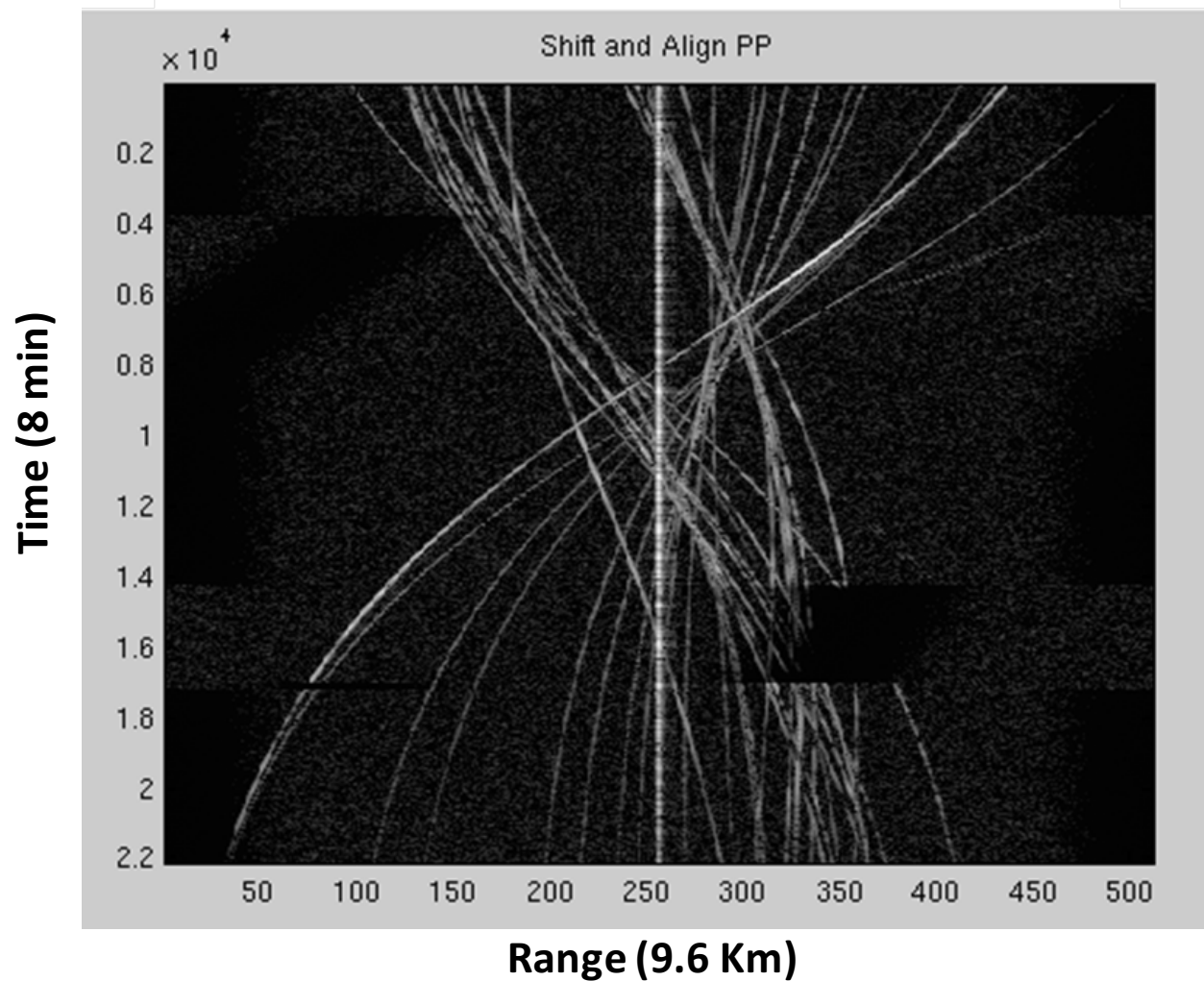
MHR Raw RTI





Launch Processing – ORS-3

MHR Aligned RTI





SSA Sensors



PAVE PAWS, Clear AFS, Alaska

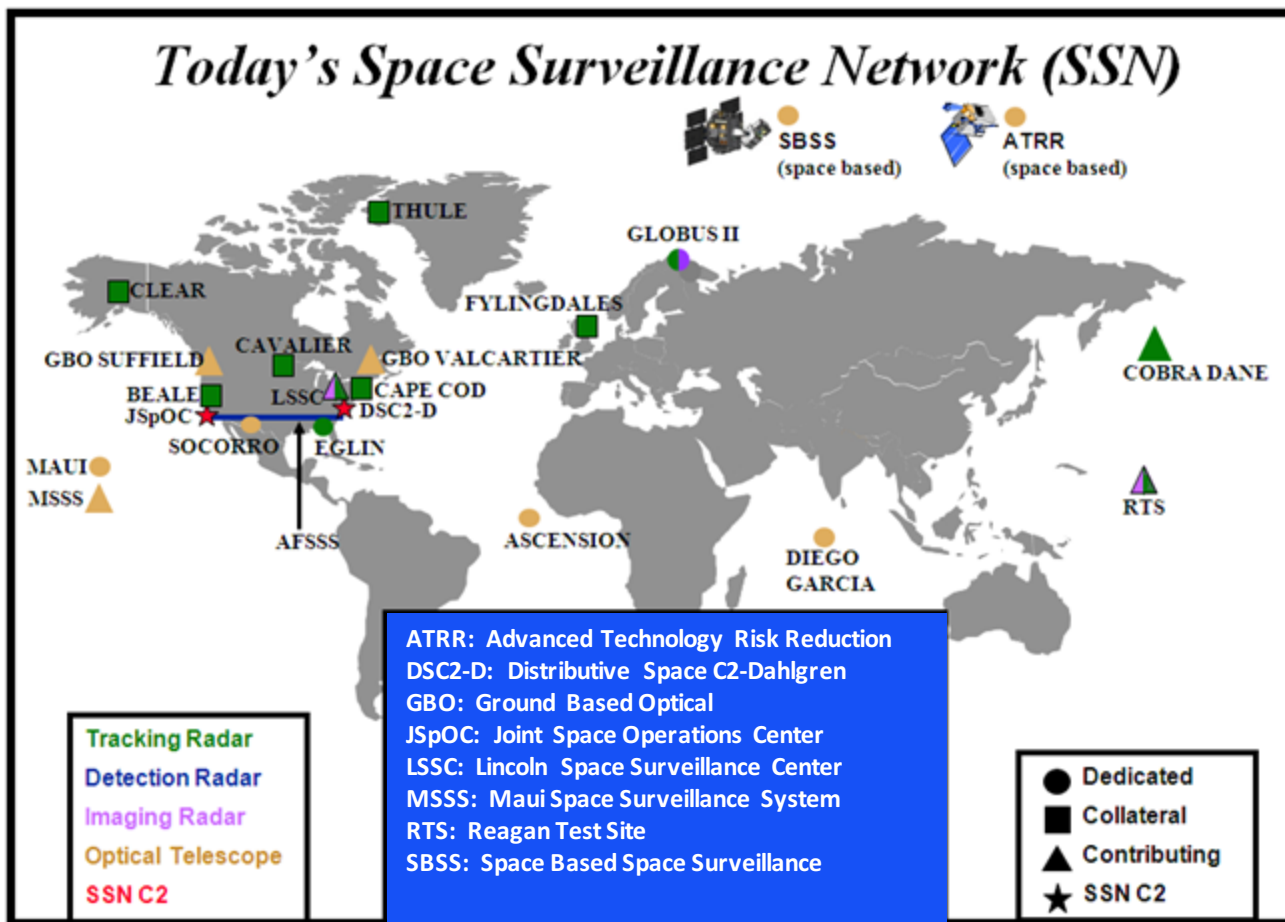


Cavalier

PARCS, Cavalier AFS, North Dakota



SSA Sensors





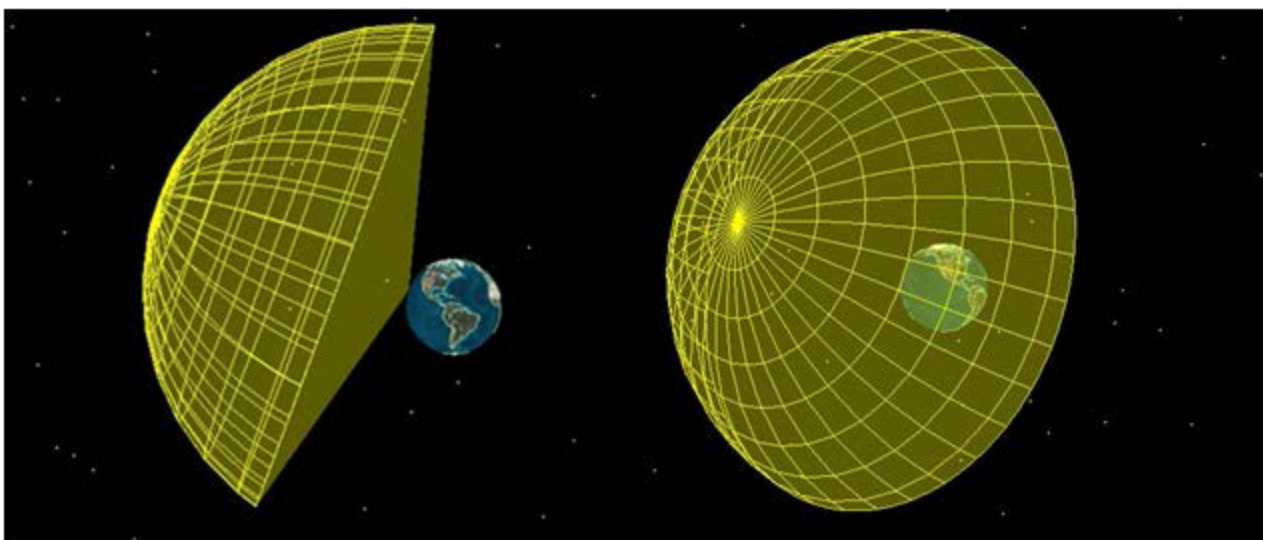
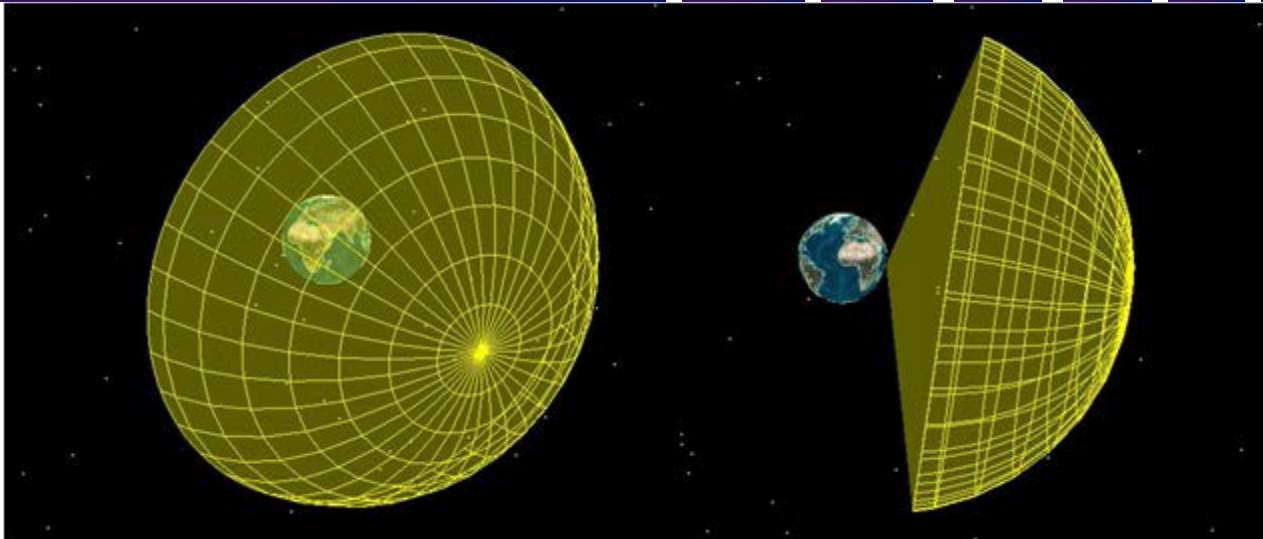
SSA Sensors





SSA Sensors (Electro-Optical)

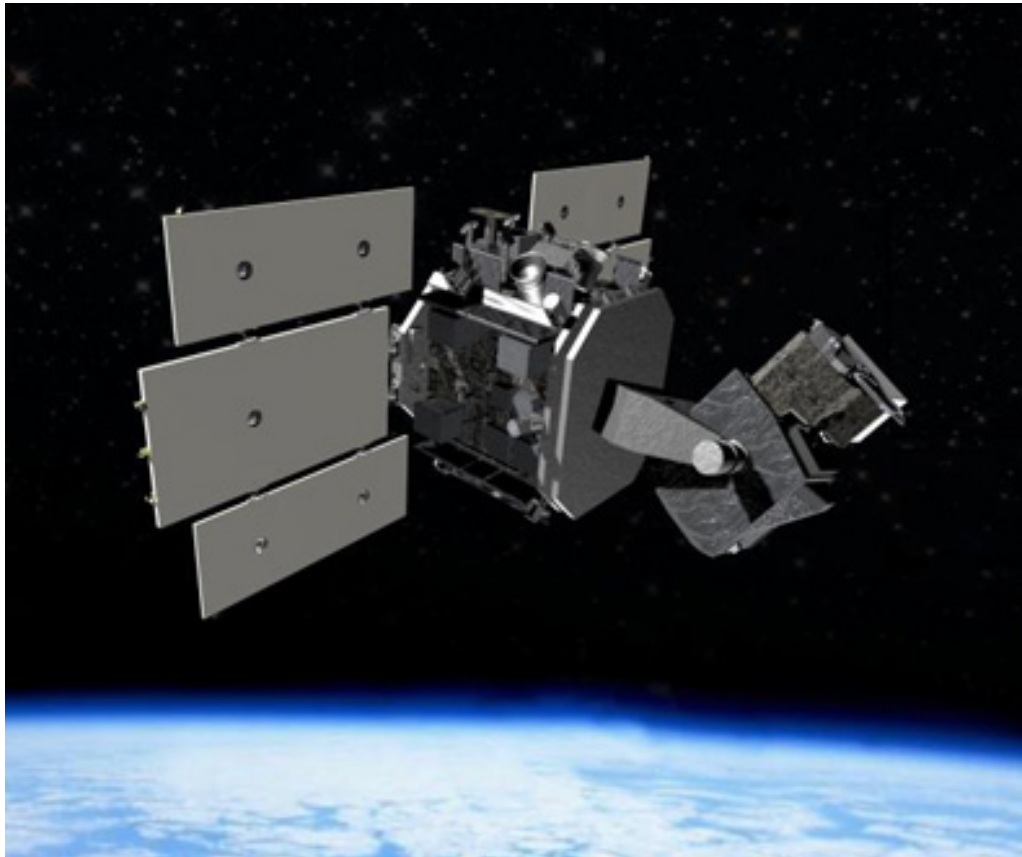
Diego Garcia
GEODSS



Maui
GEODSS



SSA Sensors (Optical Sensing Satellite)



Space Based
Space Surveillance



Help us help you...

- Stay no longer in orbit than required by mission life
- Plan and share orbital tracking requirements w/ JFCC SPACE/JSpOC
- Launch into an orbit ≥ 45 degree inclination to ensure max sensor coverage
- Utilize tagging and tracking hardware and software
- File Orbital Data Request and R15s early with JFCC SPACE/JSpOC
- Commit to ongoing engagement with those who provide sensor tracking
- Conduct modeling and simulation of your CubeSat deployment sequence
- Conduct early engagement through Technical Interchange Meetings



R-15 info

The R-15 is a comprehensive summary of a launch event:

- Launch site, date, and window
- Orbital parameters of launch, to include sequence of events from liftoff to final injection into operational orbit
- Payloads to achieve orbit, with lifespan, operating positions, physical characteristics, and mission description
- Rocket bodies (booster segments) to achieve orbit, and deorbit plan if applicable
- Transmitting frequency and power of all devices
- Description of all other objects achieving orbit, including debris, debris clusters, bolts, etc.



Promising Technologies

- RFID-transmitter
- GPS-transmitter
- Optical emitter tagging
- Colored diode lights
- Corner reflectors
- Radio beacon (GPS)
- Sharing Telemetry, Tracking and Control (TT&C) frequencies via Space-Track.org registration

(U) Questions



<https://www.space-track.org>